



**PVsyst V7.3.4**

VC0, Simulation date:  
15/06/23 18:08  
with v7.3.4

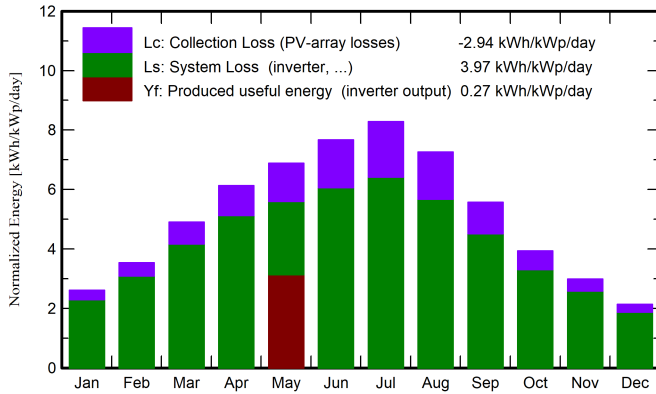
Kishoa SL (Spain)

**Main results**

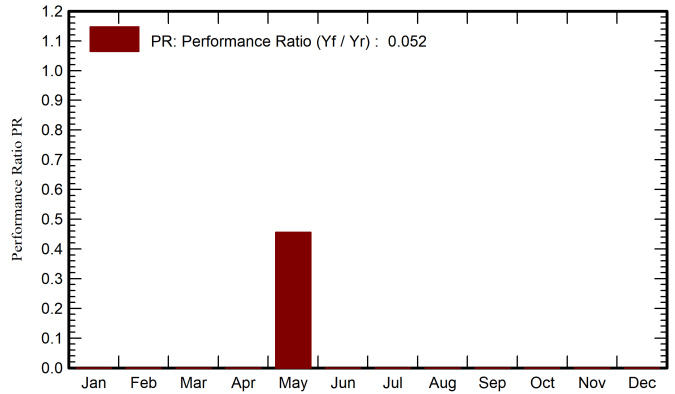
**System Production**

Produced Energy	9734.66 kWh/year	Specific production	97 kWh/kWp/year
Used Energy	23309.34 kWh/year	Perf. Ratio PR	5.16 %
		Solar Fraction SF	41.76 %

**Normalized productions (per installed kWp)**



**Performance Ratio PR**



**Balances and main results**

	GlobHor	DiffHor	T_Amb	GlobInc	GlobEff	EArray	E_User	E_Solar	EUused	EFrGrid
	kWh/m <sup>2</sup>	kWh/m <sup>2</sup>	°C	kWh/m <sup>2</sup>	kWh/m <sup>2</sup>	kWh	kWh	kWh	kWh	kWh
January	71.2	25.99	7.71	80.8	76.5	7133	0	0	6953	0
February	90.6	30.90	9.46	99.1	94.7	8668	0	0	8455	0
March	143.1	45.80	12.57	152.0	145.4	12941	0	0	12626	0
April	178.3	59.62	13.96	183.9	176.3	15396	0	0	15019	0
May	210.7	73.12	18.77	213.4	204.6	17402	23309	9735	7246	13575
June	228.6	67.19	24.54	230.1	221.1	18222	0	0	17794	0
July	254.3	48.21	26.67	256.9	246.9	19934	0	0	19470	0
August	219.4	49.57	26.66	225.2	215.9	17632	0	0	17229	0
September	159.3	47.78	22.60	167.2	160.3	13557	0	0	13241	0
October	113.5	41.10	17.30	122.1	116.7	10260	0	0	10015	0
November	79.7	26.68	11.13	89.6	85.2	7789	0	0	7597	0
December	58.3	24.75	8.23	66.2	62.6	5843	0	0	5692	0
<b>Year</b>	<b>1807.1</b>	<b>540.71</b>	<b>16.68</b>	<b>1886.5</b>	<b>1806.2</b>	<b>154777</b>	<b>23309</b>	<b>9735</b>	<b>141337</b>	<b>13575</b>

**Legends**

GlobHor	Global horizontal irradiation	EArray	Effective energy at the output of the array
DiffHor	Horizontal diffuse irradiation	E_User	Energy supplied to the user
T_Amb	Ambient Temperature	E_Solar	Energy from the sun
GlobInc	Global incident in coll. plane	EUused	Unused energy (no grid injection)
GlobEff	Effective Global, corr. for IAM and shadings	EFrGrid	Energy from the grid